

## Using MikroTik devices for power monitoring:

A problem arises when not all highsites have power monitors installed. A solution to this problem would be to use the Mikrotik Router onsite that can supply battery voltage information, to monitor the site voltage.

The Mikrotik voltage reading is not 100% accurate, hence an offset value must be added (or subtracted) from the Mikrotik voltage reading to determine the actual voltage onsite.

A new tab called Voltage has been added to the Network Devices menu/page. This tab is to accommodate a flag which indicates whether this router should be used for voltage monitoring, as well as the offset value to be used.

Edit Network Device #1

Device Mast Interfaces Changes IP Accounting IP Pools Configs Backups Sys Voltage Downtime Passwords MT Users Audit Trail

Voltage Monitoring Enabled ☒ Yes

Normal Voltage 60 Volts

Generate Low Voltage Alerts ☒ Yes

Voltage Offset -1.20 V

Last Voltage Reading 48 V as at 2018-09-25 14:43:24

Computed Voltage 46.8 V

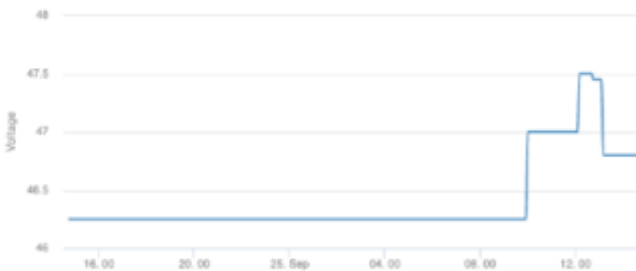
Refresh Show 5 Rows Search: Show/Hide Columns 1 Day Fetch Now

Date	Router Voltage	Voltage Offset	Adjusted Voltage
2018-09-25 14:43:24	48 V	-1.20 V	46.800 V
2018-09-25 14:42:35	48 V	-1.20 V	46.800 V
2018-09-25 14:41:34	48 V	-1.20 V	46.800 V
2018-09-25 14:40:33	48 V	-1.20 V	46.800 V
2018-09-25 14:39:32	48 V	-1.20 V	46.800 V

Showing 1 to 5 of 4,538 entries

Previous 1 2 3 4 5 ... 908 Next

Close Scan Ping Probe Delete Save Changes



The Voltage column has been added as a hidden field on the Network Devices list view screen. To unhide the column, click on the Show/Hide Columns button and select the column to display.

Customers Data Hotspots Workflow Devices Sales Billing Reports Tools Setup

Network Devices

+ Add Device + Update Data/Tel Passwords + Update Mikrotik Passwords Refresh

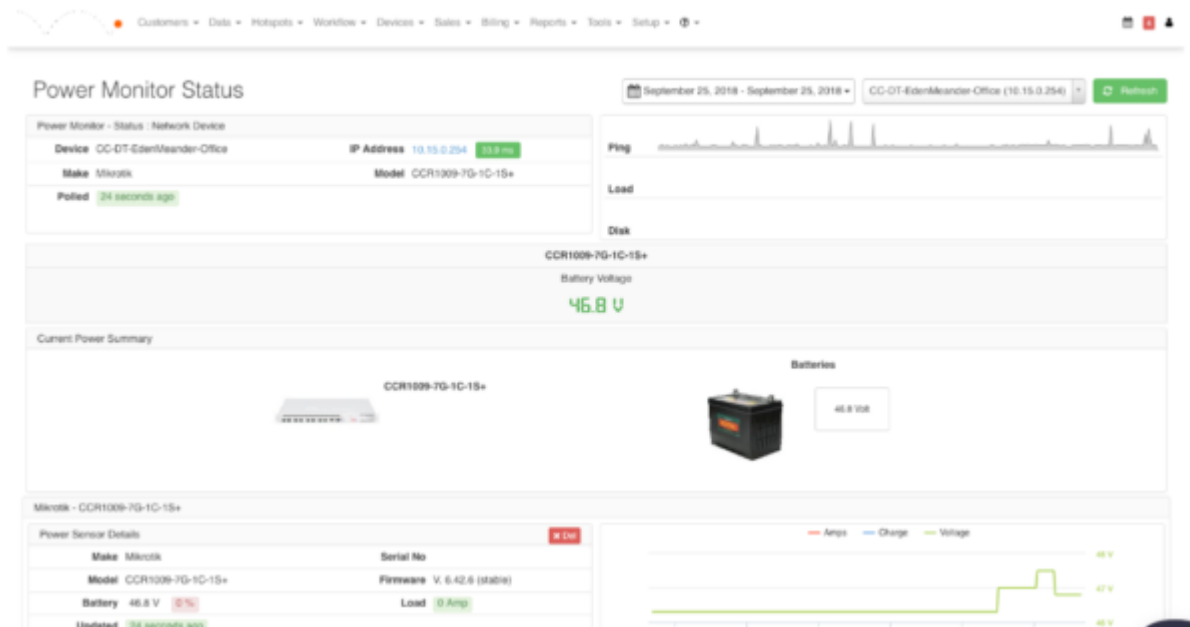
All Locations Select one or more Labels All Manufacturers Normal

Show 10 Rows Search Search Copy Columns Clipboard Export Columns CSV Export Columns Excel Show/Hide Columns

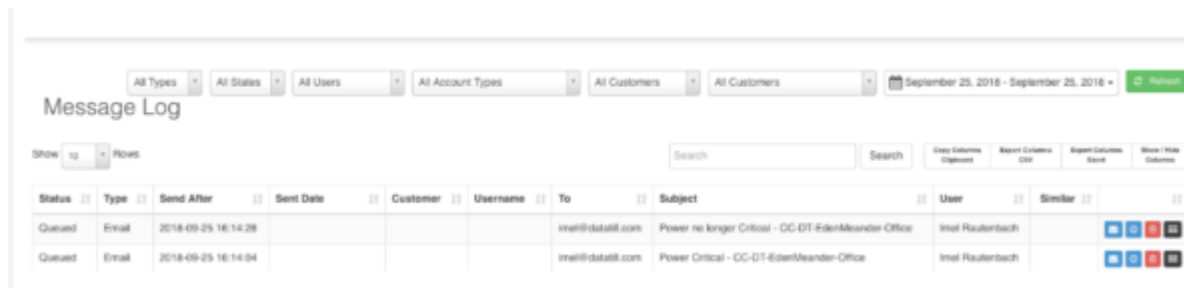
Model	SW Ver	Description	Location	IP Address	CPU	Last Scan	Last Config Change	Last Detected Change	Last Backup	Down MTD	Scan Status	Labels	Voltage
Mikrotik CCR1009-7G-1C-15m	6.42.6	CC DT: EdenMeador Office	Eden Meador	10.15.0.254	100%	2018-09-25 16:14:08	2018-09-21 09:59:23	2018-09-21 08:28:00	2018-09-21 08:59:23	14 minutes	Ping 30 sec Scan 5 sec	Power Router	46.80 V
Mikrotik RB5113-24nD	6.42	Intel P&D	Eden Meador	10.15.0.220	100%	2018-09-25 16:09:50	2018-09-25 13:43:14	2018-09-21 08:51:21	2018-09-25 13:43:14	15 minutes	Ping 30 sec Scan 5 sec	Hotspot	

Showing 1 to 2 of 2 entries

The Power Monitor drill-down screen now shows stats for these Mikrotik based monitors.



Power Monitoring alerts are also triggered when these devices drop below or spike above minimum voltage levels. These alerts can be viewed under the Message Log tool.



**Message Log**

All Types | All States | All Users | All Account Types | All Customers | All Customers | September 25, 2018 - September 25, 2018 | Refresh

Show 10 Rows

Search: [REDACTED] Search

Group Columns: [REDACTED] Report Columns: [REDACTED] Report Columns: [REDACTED] More / Hide Columns

Status	Type	Send After	Sent Date	Customer	Username	To	Subject	User	Similar
Queued	Email	2018-09-25 16:14:28				imel@datall.com	Power no longer Critical - CC-DT-EdenMeander-Office	Imel Rautenbach	[Icons]
Queued	Email	2018-09-25 16:14:34				imel@datall.com	Power Critical - CC-DT-EdenMeander-Office	Imel Rautenbach	[Icons]